

DSS Fix Pack Installation Guide

1.1 Preparations

- Download the fix pack.
- Copy the fix pack to the server where DSS Professional/Express is installed.



For distributed deployment, the fix pack must be installed on all servers.

1.2 Installing Fix Pack



Step 1 Double-click the fix pack .



- The name of the fix pack includes the version of the DSS, and the version and release date of the fix pack. Confirm the information before installation. For example: General_DSS Professional_Patch_Installer_V8.000.0000004.0.R.20211111.exe.
- The fix pack of a later version will overwrite the earlier version.

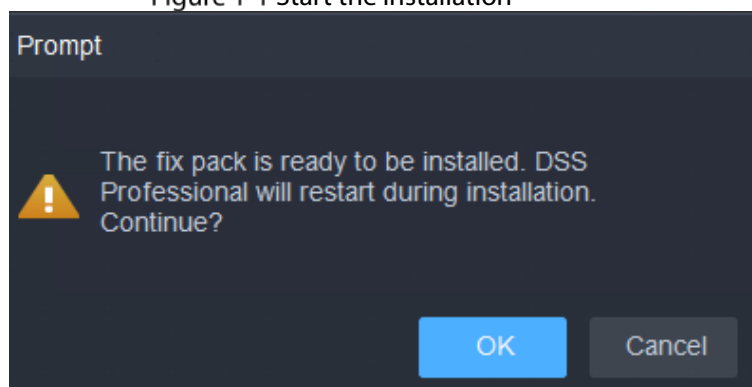
Step 2 Click **OK** to start the installation.



Installation might fail under the following circumstances:

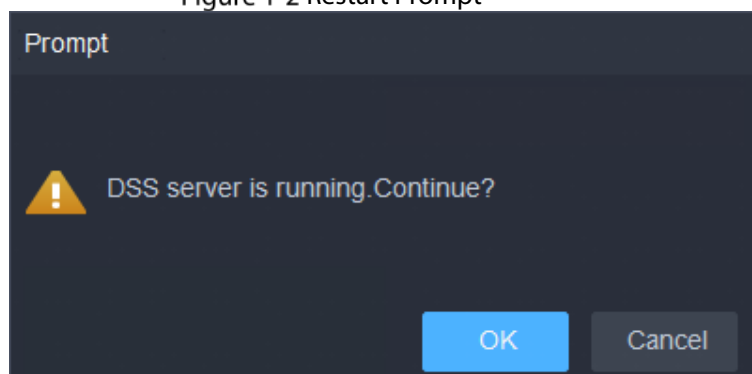
- DSS Professional/Express is not installed on the server.
- The versions of DSS Professional/Express and the fix pack do not match.
- A fix pack of the same or higher version is already installed on the server.

Figure 1-1 Start the installation



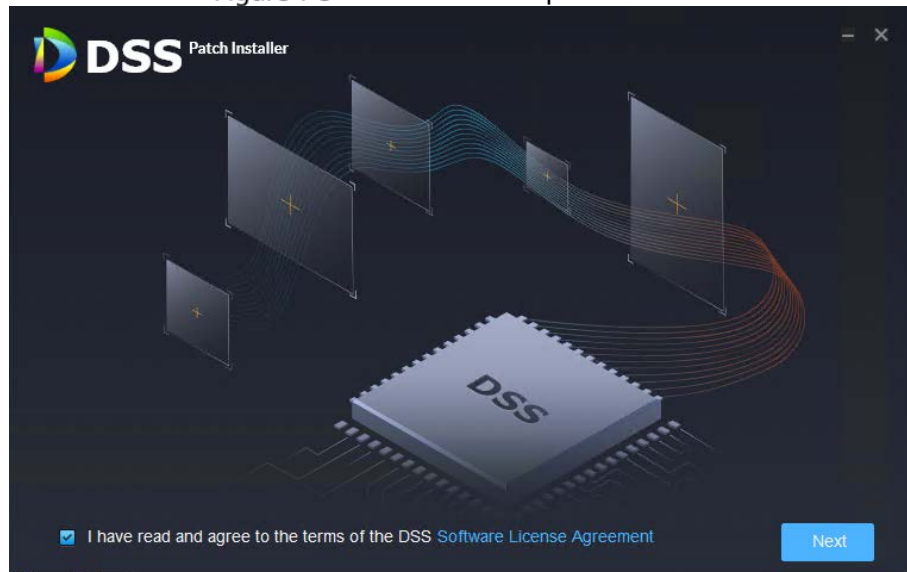
Step 3 Click **OK**.

Figure 1-2 Restart Prompt



- Step 4** Select **I have read and agree to the terms of the DSS Software License Agreement**, and then click **Next**.
The installation progress is displayed.

Figure 1-3 Install the DSS fix pack



- Step 5** After installation completes, click **Run** to start the DSS server.

Figure 1-4 Start the DSS server



- Step 6** View the fix pack version on the DSS server and the client.

Figure 1-5 View the fix pack version on the DSS server

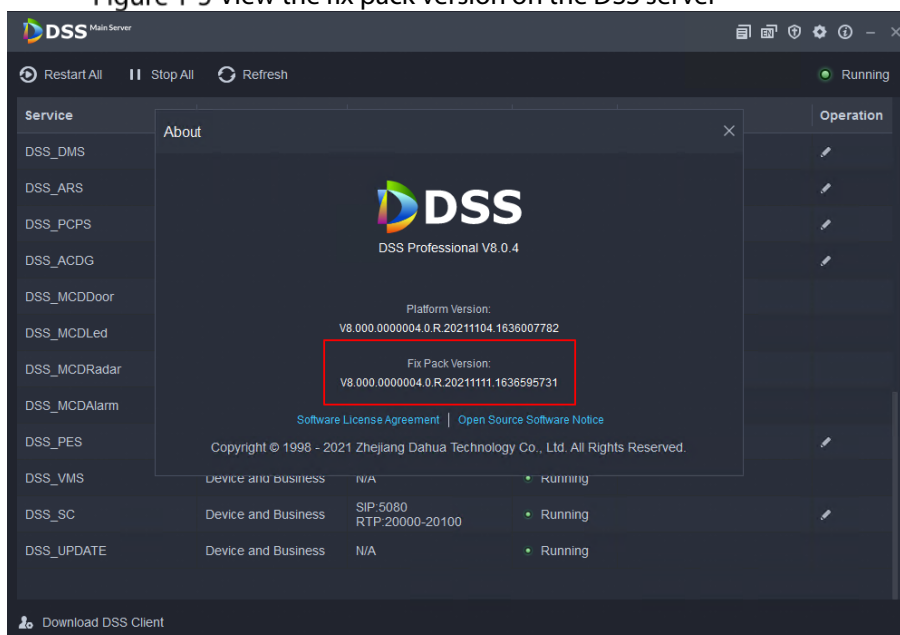


Figure 1-6 View the fix pack version on the client



1.3 Uninstalling Fix Pack



After the fix pack is uninstalled, DSS Professional/Express will restore to the previous baseline version.

Step 1 Go to the patch_backup folder in the installation directory of the DSS server.

For example: C:\DSS\DSS Server\patch_backup

Step 2 Run uninst.exe.

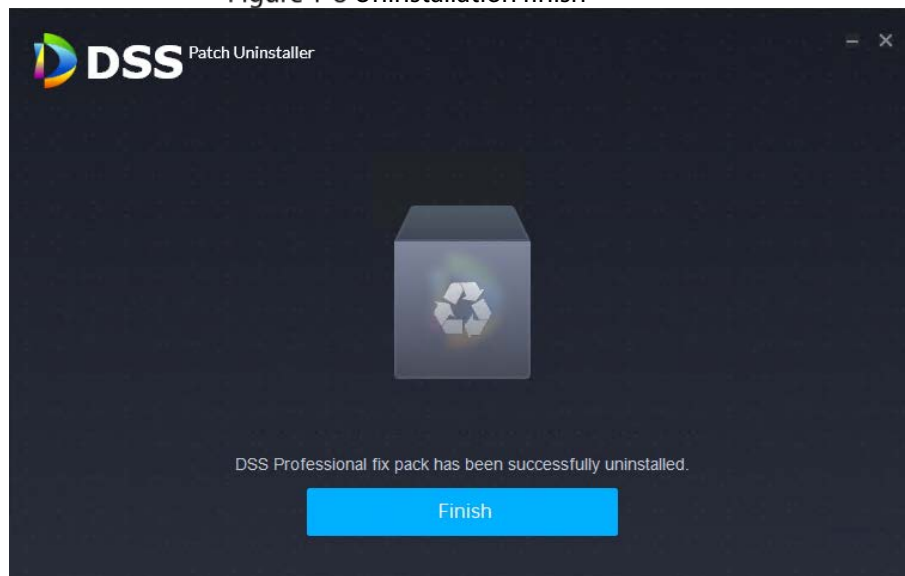
Step 3 Click **Yes**.

Figure 1-7 Uninstallation prompt



Step 4 Click **Finish**, and then all services will restart.

Figure 1-8 Uninstallation finish



1.4 Viewing Logs

Step 1 Go to the patch_backup folder in the installation directory of the DSS server.

For example: C:\DSS\DSS Server\patch_backup

Step 2 Open the file named "patch_install.log".

Step 3 View the logs.

For example:

1 2021-09-06 16:47:06 1630918026501 1 General_DSS

Professional_Patch_Installer_V8.000.0000004.0.R.20210906.1630917252

Table 1-1 Log description

1	2021-09-06	16:47:06	1630918026501	1	General_DSS Professional_ Patch_Install er_V8.000.00 00004.0.R.20 210906.1630 917252
<ul style="list-style-type: none">• 1: Installed• 0: Uninstalled	The date of installation or uninstallation.	The time of installation or uninstallation.	The timestamp of installation or uninstallation.	<ul style="list-style-type: none">• 1: Success• 0: Failure	Fix pack version.